



FLAT 1 THE ASHWOOD

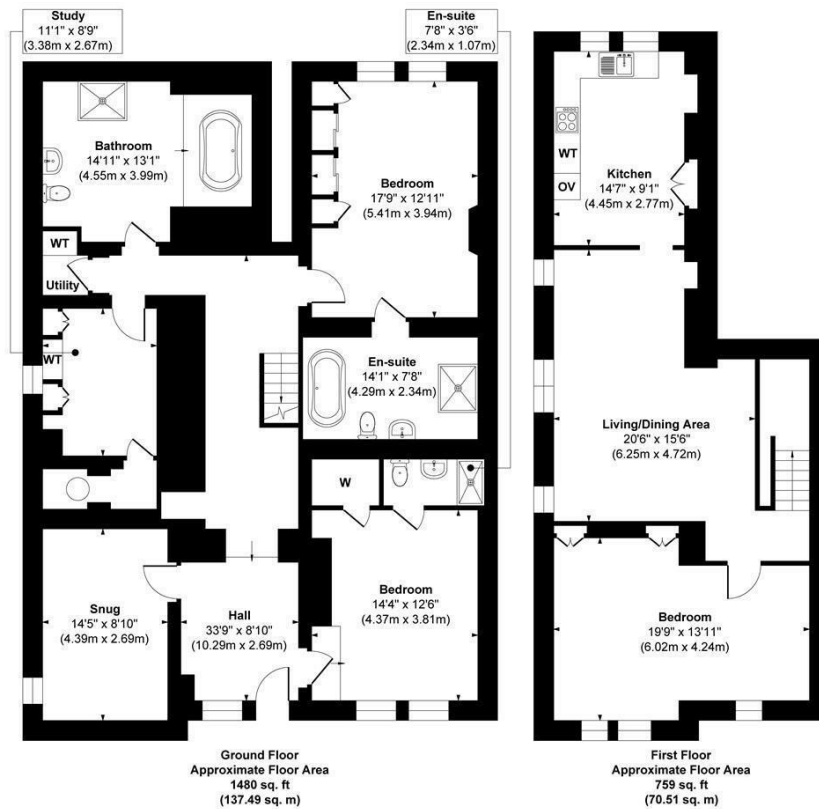
LEEDS, LS6 2FF

£600,000
LEASEHOLD

This exceptional, chain-free duplex apartment spans over 2,200 sq ft within a Grade II listed 19th-century building in one of Leeds' most thriving areas. Beautifully combining period elegance with modern luxury, it features spacious living areas, a custom-built 2023 kitchen, and three stylish bathrooms, ideal for young professionals seeking both character and convenience.

MONROE

SELLERS OF THE FINEST HOMES



Approx. Gross Internal Floor Area 2239 sq. ft / 208.00 sq. m

Illustration for identification purposes only, measurements are approximate, not to scale.

Copyright © Zenith Creations.



Energy Efficiency Rating		
	Current	Potential
Very energy efficient - lower running costs		
(92 plus) A		
(81-91) B		
(69-80) C		
(55-68) D		
(39-54) E		
(21-38) F		
(1-20) G		
Not energy efficient - higher running costs		
England & Wales	EU Directive 2002/91/EC	

Agents Note: Whilst every care has been taken to prepare these particulars, they are for guidance purposes only. All measurements are approximate and are for general guidance purposes only and whilst every care has been taken to ensure their accuracy, they should not be relied upon and potential buyers/tenants are advised to recheck the measurements

Alwoodley Sales
716 King Lane Alwoodley
Leeds
West Yorkshire
LS17 7BA

0113 870 4443
hello@monroeestateagents.com
www.monroeestateagents.com

MONROE

SELLERS OF THE FINEST HOMES